

## VENUE & CATERING RIDER:

*All the requirements specified in this Rider are needed to ensure a successful concert. Any changes to this rider should be discussed with the Tour Manager. Presenter agrees to provide all the following Rider requirements at no charge to the Artist:*

### **1. Artist Tickets**

The promoter shall set aside ten (5) pairs of tickets (ten – 10) for use to The Nylons. These seats should be located in between the tenth and fifteenth row in the centre area. Unused tickets will be released on the day of performance by The Nylons' Tour Manager.

### **2. Dressing Rooms**

One large dressing room to accommodate four comfortably or two smaller dressing rooms to accommodate two in each. Dressing rooms should be equipped with mirrors, running water, toilet and showers. Rooms must be supplied with soap, Kleenex, ashtrays and clothes hangers.

### **3. Towels**

We need at least 4 bath towels available in the dressing room area.

### **4. A Competent Wardrobe Person**

Required at sound check. Please report to the Tour Manager upon arrival. Wardrobe person should be supplied with one ironing board, one clean steam iron, one steamer – and an extension cord if necessary. The wardrobe person will be involved in the preparation of The Nylons stage costumes (pressing, steaming, touching up shoes and maybe minor repairs) and packing after show. If union hall, minimum call required only).

### **5. Merchandise**

One table (approx. 3' x 6') in lobby for CD sales and one volunteer to assist with sales, plus one table and four chairs for The Nylons to sign autographs after the concert. Venue to supply sellers. Venue commission not to exceed 15%.

### **6. AT LOAD-IN** for (2) Nylons production staff plus local crew members.

- Coffee, with cream and milk, sugar and artificial sweetener      - Fresh muffins and donuts OR fruit / deli tray

### **7. FOOD** THE FOLLOWING FOOD SHOULD SERVICE FOR seven (7) PEOPLE.

- FOOD AND BEVERAGE TO BE PLACED IN OR NEAR THE ARTIST'S DRESSING ROOM AT SOUND CHECK UNTIL ONE HOUR AFTER SHOW.  
- 7 hot meals (soup or salad/ main meat dish/ dessert)

### **8. BEVERAGES**

- Hot coffee – with cream/milk/sugar/sweetener      - 6 cans of regular Coke and 6 cans of Diet Coke  
- Fruit juices – 1 bottle of Orange and 1 bottle of Apple – No sugar      - 12 bottles of beer – no light beer  
- 2 bottles of quality white Chardonnay wine (no more than \$20)      - 2 gallons of non-sparkling spring water

*If there are any problems with meeting this rider, please contact Paul Ryan 604-6760842    [Limelight@novuscom.net](mailto:Limelight@novuscom.net)*

# NYLONS

March 2006

## AUDIO:

**Due to the dynamic nature of this show, the Sound System must be totally free of hums or buzzes!**

Adequate high quality power & speaker system to cover the room

5 - matching high quality UHF Diversity Wireless Microphone Systems c/w Dynamic capsules (Prefer Shure U4-D/58 system)  
4 round base mic stands

## FOH

16 channel (at least) high quality console  
1 delay  
3 spx 990  
1 Lexicon PCM 70,80,81,90,or 91  
4 compressors  
1 single play Mini disc player  
1 cd player

## Monitors

1 monitor board and operator  
Mix 1 2 wedges down stage  
Mix 2 2 side fill [3 way] down stage  
Mix 3 2 side fill [3 way] up stage

*CONTACT: Peter Harris, Audio Technician Cell: 416-676-3670 [peterharris@sympatico.ca](mailto:peterharris@sympatico.ca)*

# NYLONS

March 2003

## LIGHTING:

ALL STAGE WASHES SHOULD BE MINIMUM 8 FIXTURES  
ONSTAGE SIDELIGHTS SHOULD BE MINIMUM 6 FIXTURES/COLOUR

## CONSOLE

1 - lighting console with 48 channel faders and 24 submasters (minimum)

## FOH

3 colour wash (R37, R57, R22)  
2 specials (R26)

## ONSTAGE

4 colour backlightwash (R68, R83, R26, R22)  
2 colour tips (pipe ends, sidelight) (R95, R49)  
13 specials (5 NC, 1 R26)  
3colour cyc (R27, R90, R83) with black scrim (if available)

## STAGE FLOOR (all on floorbases)

12 MFL PARS (4 each in R68, R49, R22)  
2 36° fixtures with gobo holders (R90)  
4 50° fixtures with gobo holders (R89)

## OTHER

2 Followspots (R37, R57, R22) with operators  
1 Hazer with fan or 1 non-Rosco fog machine (w/programmable remote or control at FOH) with fan  
Main drape is used  
Sufficient COM is needed for LD to communicate with followspot operators and backstage

## STAGING:

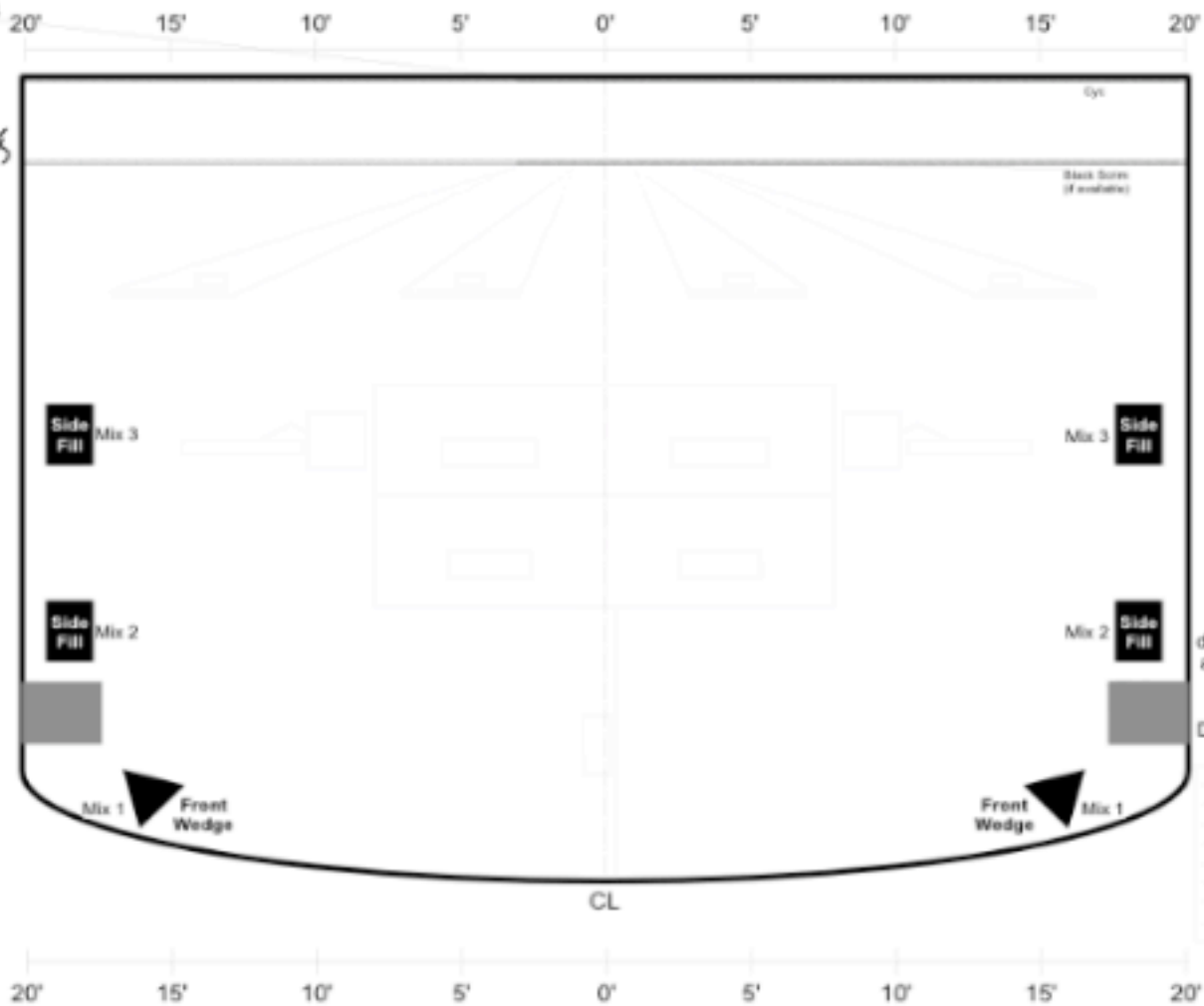
2 - 4'x8'x8" risers  
2 - 4'x8'x16" risers  
ALL risers must be black and skirted in black  
2 - 2'x2' (approx.) black tables (or skirted in black)

CONTACT: Steph. Gotschel, Lighting Designer Cell: 416-991-8891 [stephs@rogers.com](mailto:stephs@rogers.com)

Date: October, 2004

Audio Page  
(Monitors)

*The Nylons*



Note: If there is a drummer in the show, a drum mic kit will be needed.

Drummer monitor mix will be Mix 4.



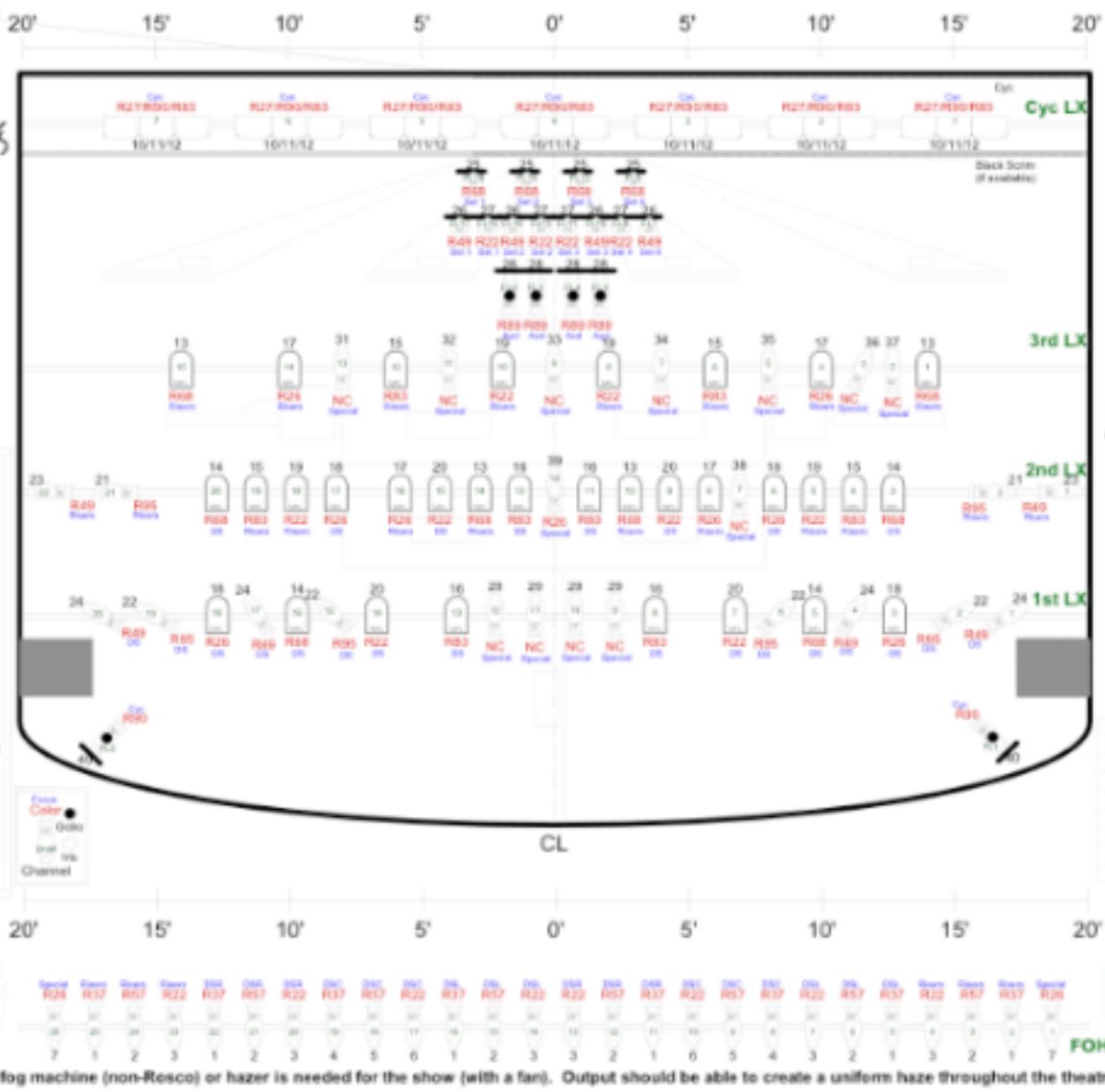
*The Nylons*

LD: Stephan Gotschel  
Phone: 416-698-2220  
Cell: 416-991-8891  
Fax: 416-698-2747  
email: stephs@imgens.com

**Legend**

- 19" Source 4
- 26" Source 4
- 36" Source 4
- 50" Source 4
- Par 64 MFL or 1 kW 8" Fresnel
- Par 64 MFL
- 3-cell Cyc Light
- Floorbase

● Focus Color  
● Gobo  
● Inset  
● Iris  
● Channel



**Gel Conversions**

Resco	Lee	Gels
R22	L22	G290
R26	L26	G245
R37	L35	G195
R49	L100	G090
R57	L194	G090
R58	L58	G290
R68	L68	G810
R83	L119	G090
R89	L89	G090
R90	L130	G030
R92	L110	G090

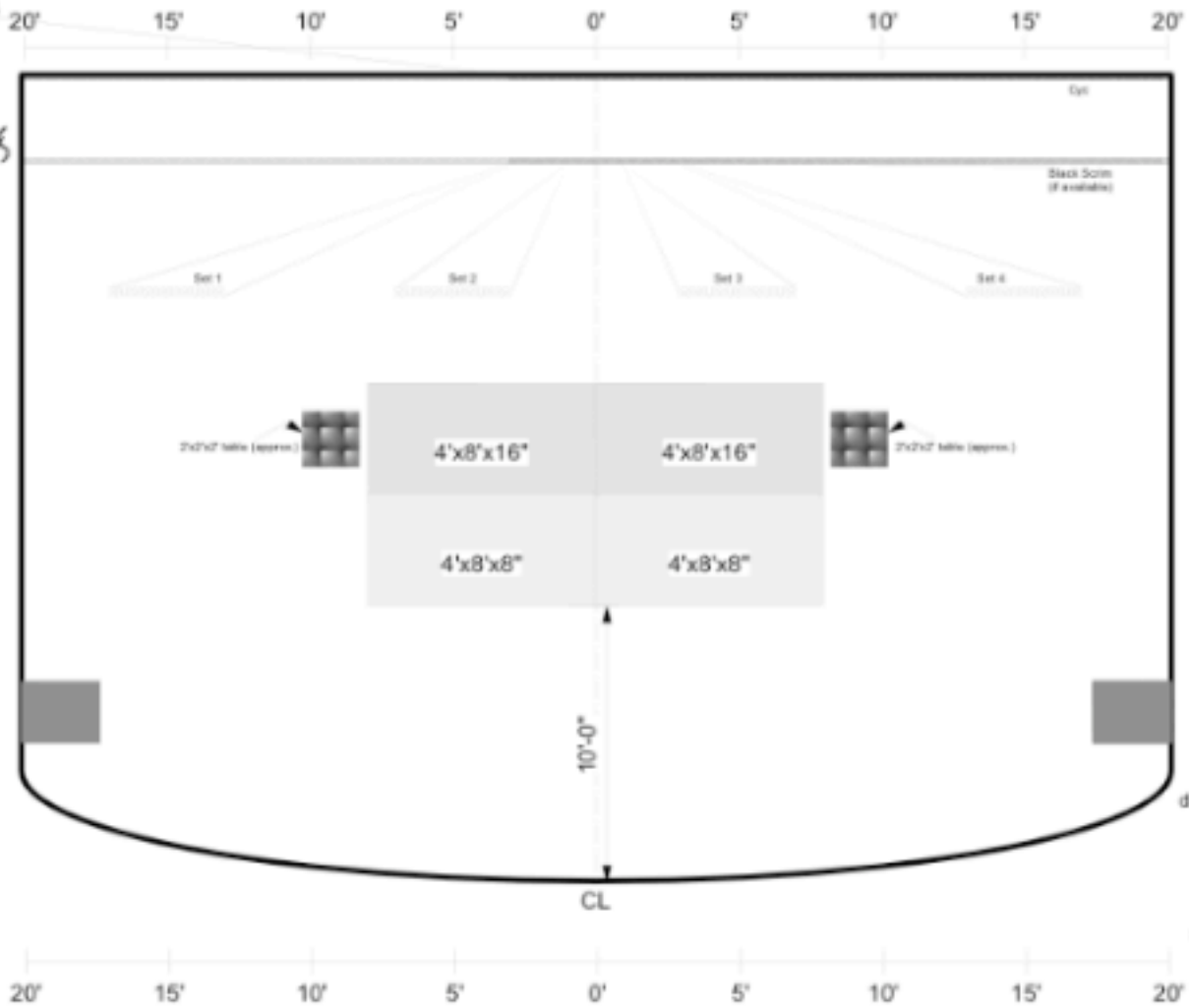
**Note:** This plot is designed for theatrical performances.  
If any modifications are needed, or for a "corporate or industrial" plot, please contact Stephan Gotschel

1 fog machine (non-Resco) or hazer is needed for the show (with a fan). Output should be able to create a uniform haze throughout the theatre.

Date: October, 2004  
Staging Page

*The Nylons*

LD: Stephan Gotschel  
Phone: 416-698-2220  
Cell: 416-991-8891  
Fax: 416-698-2747  
email: stephs@rogens.com



**Note:** If there is a drummer in the show, a drum riser will be needed behind the other risers.

The drum riser should be 8'x8'x24"